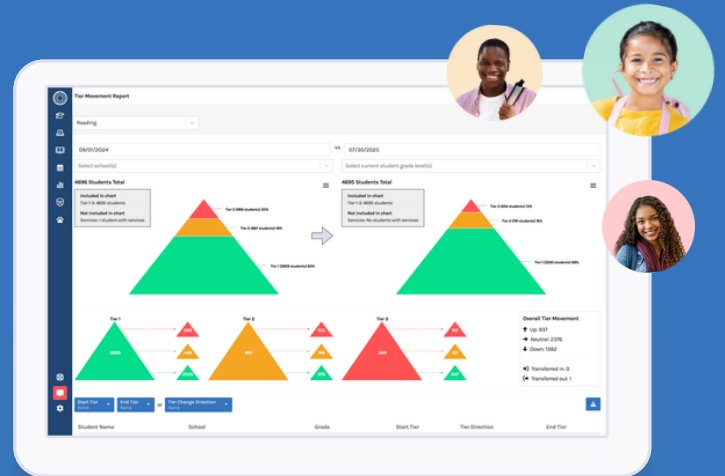


A Single Platform for Student Support and System Insights



Centralize Data

Consolidate academic, behavior, attendance, and intervention data

- **Automate** data ingestion
- **Access** assessments, discipline data, support plans, and much more
- **View** complete student profiles and system-level analytics

Take Action

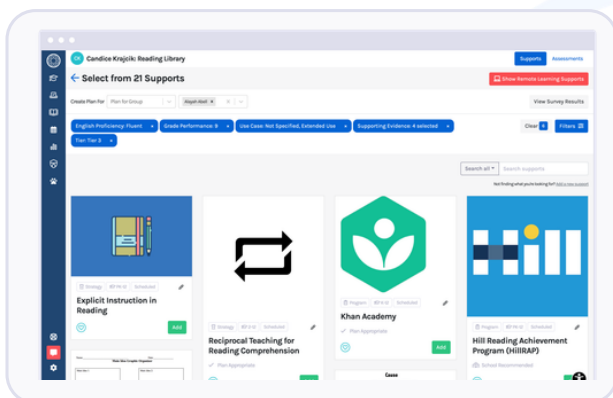
Enable district and school-level teams to support the whole child

- **Surface** real-time data on student risk and needs
- **Streamline** end-to-end student support practices
- **Follow through** on implementation fidelity

Evaluate Impact

See trends over time and analyze your data with clear, actionable reports

- **Monitor** the effectiveness of instruction and intervention
- **Track** patterns across demographics, SPED status, and tier level
- **Identify** gaps, priorities, and next steps



Bring your data, analytics, and MTSS workflows together

so your teams can make informed decisions and provide timely support at the district, campus, and student level.





Meet district goals with one solution that connects your work across:

- Multi-Tiered System of Supports (MTSS)
- Community Schools (CCSPP) & CHYBI Management
- Positive Behavior Int. & Supports (PBIS)
- Threat and Suicide Risk Assessment
- Attendance & Chronic Absenteeism Initiatives
- Graduation Readiness

“

Why California District Leaders Choose Branching Minds

“Branching Minds has it all. It has been the game changer for us to make a true whole child system of support. Without it, we would not be as far along as we are, and we wouldn't see our kids thriving as they are. **We finally have a system that pulls it all together for us.**”

- Karen Arnett, Director of Teacher & Student Support, Springs Charter Schools

With Branching Minds, You Gain:

- ➔ A single source of truth for student progress and system performance
- ➔ More consistent student support practices across schools
- ➔ Time and cost savings with proven return on investment



See what's possible with Branching Minds

Student Name	ID	Grade	School	A	B	C	Reading	Math	Behavior	Writing
Tremayne Aaron	26138	7	Oak Middle School	L	M	H	A 3	A 1	A 2	A 1
Cason Abel	39437	5	Willow Elementary	L	H	L	A 1	A 1	A 3	A 1
Alayah Abell	41430	12	Hickory High Scho...	L	L	L	A 2	A 2	A 1	A 1
Gage Abernathy	39369	4	Elm Elementary	L	L	L	A 1	A 1	A 1	A 1
Jaelyn Abner	26912	7	Oak Middle School	L	L	L	A 1	A 3	A 1	A 1
Maggdalena Abney	40237	10	Hickory High Scho...	L	L	L	-	A 1	A 1	-
Cristobal Abraham	26205	7	Oak Middle School	L	L	L	A 3	A 1	A 1	A 2
Buddy Abrams	24453	9	Hickory High Scho...	L	L	M	A 2	A 1	A 1	A 3
Lissie Abreu	23426	10	Hickory High Scho...	L	L	L	A 1	A 3	A 1	A 1
Soloman Acevedo	26034	7	Oak Middle School	L	L	L	A 1	A 1	A 2	A 1
Harriett Acker	39558	4	Birch Elementary	L	M	H	A 3	A 1	A 1	A 1
Gonzalo Ackerman	29503	4	Maple Elementary	L	L	H	A 3	A 1	A 1	A 1
Lester Acree	41901	K	Maple Elementary	L	H	M	A 3	A 3	A 3	A 1
Brandy Acuna	42821	PK	Pine Elementary	L	L	H	A 1	A 1	A 1	A 2

