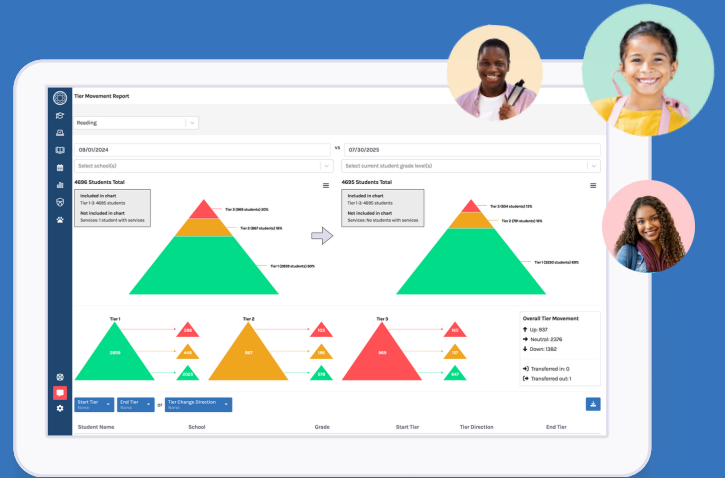


A Single Platform for Student Support and System Insights



Centralize Data

Consolidate academic, behavior, attendance, and intervention data

- **Automate** data ingestion
- **Access** assessments, discipline data, support plans, and much more
- **View** complete student profiles and system-level analytics

Gain Insight

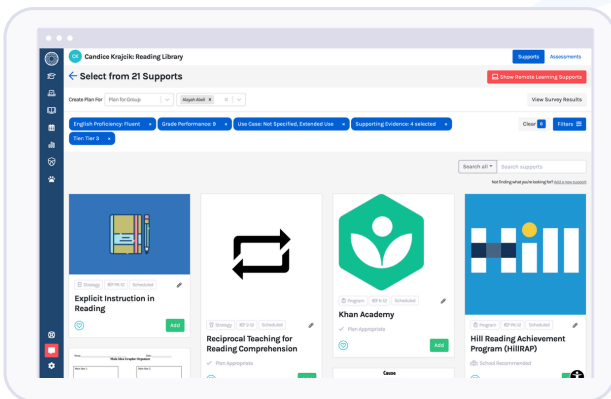
Analyze your data with clear, actionable reports

- **Monitor** the effectiveness of instruction and intervention in real time
- **Track** patterns across demographics, SPED status, and tier level
- **Identify** priorities and next steps

Take Action

Make it easy to create intervention plans and document progress

- **Set** consistent cut scores for automatic tiering
- **Customize** the integrated Support Library to reflect GA-aligned best practices
- **Follow through** on implementation fidelity



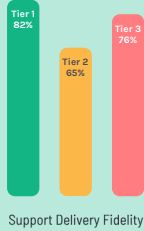
Bring your data, analytics, and MTSS workflows together

so your teams can make informed decisions and provide timely support at the district, campus, and student level.



Monitor Your District's Progress Towards Georgia Priorities:

- HB 268 School Safety Requirements
- Threat and Suicide Risk Assessment
- Attendance & Engagement Initiatives
- MTSS, RTI, and PBIS Implementation
- HB 307 Georgia Early Literacy & Dyslexia Act
- Graduation Readiness



Today's Leadership Summary

Why Georgia Leaders Choose Branching Minds

Branching Minds improved the fidelity of interventions and progress monitoring in our school. As an administrator, I can monitor use and ensure supports are implemented consistently.

— Amy Hill, Assistant Principal (retired), Clarke County Schools, GA

With Branching Minds, You Gain:

- ➔ A single source of truth for student progress and system performance
- ➔ More consistent student support practices across schools
- ➔ Time and cost savings with proven return on investment



See what's possible with Branching Minds

Demo Teacher: Students

Showing 4697 Students

No filters added.

Actions ▾ My Students

<input type="checkbox"/>	Student Name	ID	Grade	School	A	B	C	Reading	Math	Behavior
<input type="checkbox"/>	Tremayne Aaron	26138	7	Oak Middle School	L	M	H	▲ 3 ○ ✓	▲ 1	▲ 2 ○ ■
<input type="checkbox"/>	Cason Abel	39437	5	Willow Elementary	L	H	L	▲ E ○	▲ 1	▲ 3 ○ ■
<input type="checkbox"/>	Alayah Abell	41430	12	Hickory High Scho...	L	L	L	▲ 2 ○ ✓	▲ 2	▲ 1 ○ ✓
<input type="checkbox"/>	Gage Abernathy	39369	4	Elm Elementary	L	L	L	▲ 1	▲ 1	▲ 1
<input type="checkbox"/>	Jaelyn Abner	26912	7	Oak Middle School	L	L	L	▲ 1	▲ 3	▲ 1
<input type="checkbox"/>	Magdalena Abney	40237	10	Hickory High Scho...	L	L	L	— ○	▲ 1	▲ 1
<input type="checkbox"/>	Cristobal Abraham	26205	7	Oak Middle School	L	L	L	▲ 3 ○ ✓	▲ 1	▲ 1
<input type="checkbox"/>	Buddy Abrams	24453	9	Hickory High Scho...	L	L	M	▲ 2	▲ 1	▲ 1 ○ ✓
<input type="checkbox"/>	Lissie Abreu	23426	10	Hickory High Scho...	L	L	L	▲ 1	▲ 3 ○ ✓	▲ 1
<input type="checkbox"/>	Soloman Acevedo	26014	7	Oak Middle School	L	L	L	▲ 1	▲ 1	▲ 2 ○ ■
<input type="checkbox"/>	Harriett Acker	39558	4	Birch Elementary	L	M	H	▲ 3	▲ 1	▲ 1 ○ ✓
<input type="checkbox"/>	Gonzalo Ackerman	29503	4	Maple Elementary	L	L	H	▲ 3	▲ 1	▲ 1
<input type="checkbox"/>	Lester Acree	41801	K	Maple Elementary	L	H	M	▲ 3 ○	▲ 3	▲ 3 ○ ■
<input type="checkbox"/>	Brandy Acuna	42821	PK	Pine Elementary	L	L	H	▲ 1	▲ 1	▲ 1