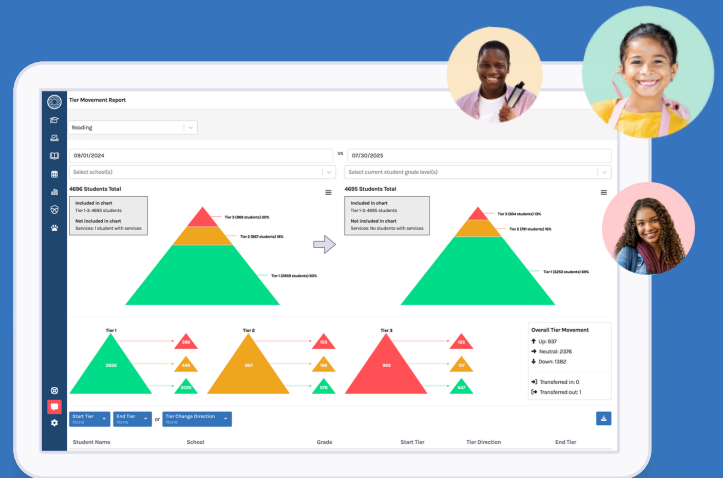


A Single Platform for Student Support and System Insights



Centralize Data

Consolidate academic, behavior, attendance, and intervention data

- **Automate** data ingestion
- **Access** assessments, discipline data, support plans, and much more
- **View** complete student profiles and system-level analytics

Gain Insight

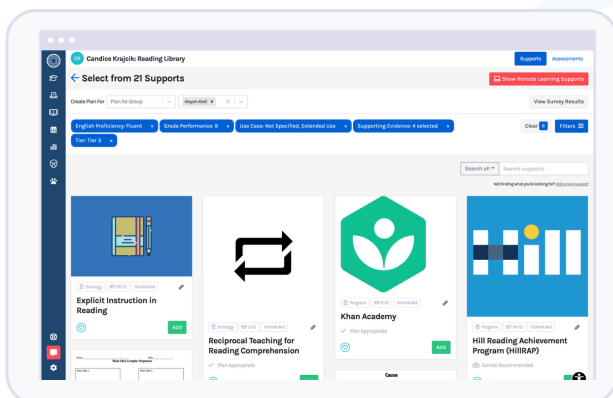
Analyze your data with clear, actionable reports

- **Monitor** the effectiveness of instruction and intervention in real time
- **Track** patterns across demographics, SPED status, and tier level
- **Identify** priorities and next steps

Take Action

Make it easy to create intervention plans and document progress

- **Set** consistent cut scores for automatic tiering
- **Customize** the integrated Support Library based on your standard protocols
- **Follow through** on implementation fidelity



Bring your data, analytics, and MTSS workflows together

so your teams can make informed decisions and provide timely support at the district, campus, and student level.



Meet district goals with one solution that connects your work across:

- HB 605 - School Safety / Threat Assessment
- Read to Achieve - Literacy
- ISB 49 - Parents' Bill of Rights
- Multi-Tiered System of Supports (MTSS)
- Attendance Initiatives
- Graduation Readiness
- Reducing Disproportionality

Why North Carolina Leaders Choose Branching Minds

We needed full staff buy-in and a way to make MTSS doable for folks. We needed to look at the whole child, including attendance and behavior, not just focus on progress monitoring data. And Branching Minds was just that.

— Emily Myers, Director of MTSS, Orange County Schools, NC

With Branching Minds, You Gain:

- ➔ A single source of truth for student progress and system performance
- ➔ More consistent student support practices across schools
- ➔ Time and cost savings with proven return on investment



See what's possible with Branching Minds

Demo Teacher: Students

Showing 4697 Students

No filters added.

Actions ▾ My Students

<input type="checkbox"/>	Student Name	ID	Grade	School	A	B	C	Reading	Math	Behavior
<input type="checkbox"/>	Tremayne Aaron	26138	7	Oak Middle School	L	M	H	▲ 3 ○ ✓	▲ 1	▲ 2 ○ ■
<input type="checkbox"/>	Cason Abel	39437	5	Willow Elementary	L	H	L	▲ E ○	▲ 1	▲ 3 ○ ■
<input type="checkbox"/>	Alayah Abell	41430	12	Hickory High Scho...	L	L	L	▲ 2 ○ ✓	▲ 2	▲ 1 ○ ✓
<input type="checkbox"/>	Gage Abernathy	39369	4	Elm Elementary	L	L	L	▲ 1	▲ 1	▲ 1
<input type="checkbox"/>	Jaelyn Abner	26912	7	Oak Middle School	L	L	L	▲ 1	▲ 3	▲ 1
<input type="checkbox"/>	Magdalena Abney	40237	10	Hickory High Scho...	L	L	L	— ○	▲ 1	▲ 1
<input type="checkbox"/>	Cristobal Abraham	26205	7	Oak Middle School	L	L	L	▲ 3 ○ ✓	▲ 1	▲ 1
<input type="checkbox"/>	Buddy Abrams	24453	9	Hickory High Scho...	L	L	M	▲ 2	▲ 1	▲ 1 ○ ✓
<input type="checkbox"/>	Lissie Abreu	23426	10	Hickory High Scho...	L	L	L	▲ 1	▲ 3 ○ ✓	▲ 1
<input type="checkbox"/>	Solomano Acevedo	26014	7	Oak Middle School	L	L	L	▲ 1	▲ 1	▲ 2 ○ ■
<input type="checkbox"/>	Harriett Acker	39558	4	Birch Elementary	L	M	H	▲ 3	▲ 1	▲ 1 ○ ✓
<input type="checkbox"/>	Gonzalo Ackerman	29503	4	Maple Elementary	L	L	H	▲ 3	▲ 1	▲ 1
<input type="checkbox"/>	Lester Acree	41801	K	Maple Elementary	L	H	M	▲ 3 ○ ■	▲ 3	▲ 3 ○ ■
<input type="checkbox"/>	Brandy Acuna	42821	PK	Pine Elementary	L	L	H	▲ 1	▲ 1	▲ 1
<input type="checkbox"/>	Deah Adje...	23225	11	Hickory High Scho...	L	L	L	▲ 1	▲ 1	▲ 1

