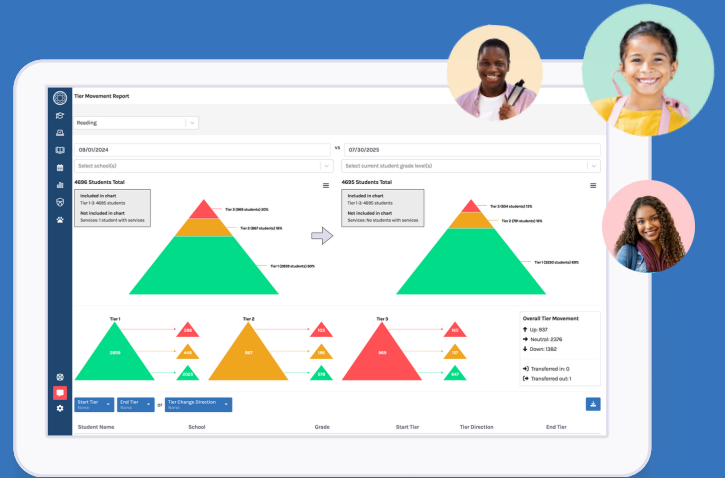


# A Single Platform for Student Support and System Insights



## Centralize Data

Consolidate academic, behavior, attendance, and intervention data

- **Automate** data ingestion
- **Access** assessments, discipline data, support plans, and much more
- **View** complete student profiles and system-level analytics

## Gain Insight

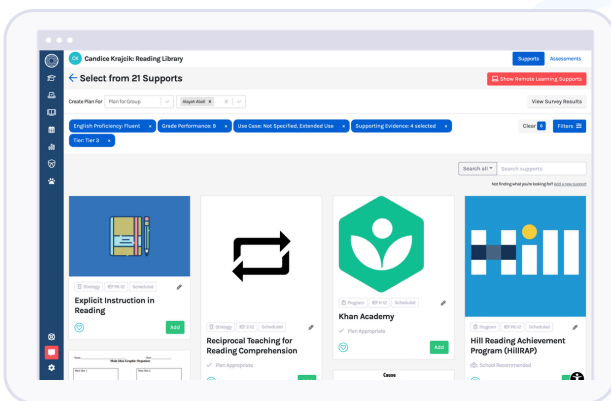
Analyze your data with clear, actionable reports

- **Monitor** the effectiveness of instruction and intervention in real time
- **Track** patterns across demographics, SPED status, and tier level
- **Identify** priorities and next steps

## Take Action

Make it easy to create intervention plans and document progress

- **Set** consistent cut scores for automatic tiering
- **Customize** the integrated Support Library based on your standard protocols
- **Follow through** on implementation fidelity



## Bring your data, analytics, and MTSS workflows together

so your teams can make informed decisions and provide timely support at the district, campus, and student level.



## Meet district goals and TEA requirements with one solution that connects your work across:

- HB1416 Accelerated Learning
- Multi-Tiered System of Supports (MTSS)
- Response to Intervention (RTI)
- Positive Behavior Int. & Supports (PBIS)
- Threat and Suicide Risk Assessment
- Attendance Initiatives
- Graduation Readiness
- Reduced Disproportionality

### Why Texas Leaders Choose Branching Minds

My staff love the visual aspect of Branching Minds. They love that all the data we need is fed through ClassLink, that we can connect the data, and that they only have to go to one place to look for all the information they need to support students and the support staff.

— Laurel Dickson, Director of MTSS, Richardson ISD

### With Branching Minds, You Gain:

- ➔ A single source of truth for student progress and system performance
- ➔ More consistent student support practices across schools
- ➔ Time and cost savings with proven return on investment



See what's possible with Branching Minds

Demo Teacher: Students

Showing 4697 Students

No filters added.

Actions ▾ My Students

Student Name	ID	Grade	School	A	B	C	Reading	Math	Behavior
Tremayne Aaron	26138	7	Oak Middle School	L	M	H	▲ 3	▲ 1	▲ 2
Cason Abel	39437	5	Willow Elementary	L	H	L	▲ E	▲ 1	▲ 3
Alayah Abell	41430	12	Hickory High Scho...	L	L	L	▲ 2	▲ 2	▲ 1
Gage Abernathy	39369	4	Elm Elementary	L	L	L	▲ 1	▲ 1	▲ 1
Jaelyn Abner	26912	7	Oak Middle School	L	L	L	▲ 1	▲ 3	▲ 1
Magdalena Abney	40237	10	Hickory High Scho...	L	L	L	—	▲ 1	▲ 1
Cristobal Abraham	26205	7	Oak Middle School	L	L	L	▲ 3	▲ 1	▲ 1
Buddy Abrams	24453	9	Hickory High Scho...	L	L	M	▲ 2	▲ 1	▲ 1
Lissie Abreu	23426	10	Hickory High Scho...	L	L	L	▲ 1	▲ 3	▲ 1
Soloman Acevedo	26014	7	Oak Middle School	L	L	L	▲ 1	▲ 1	▲ 2
Harriett Acker	39558	4	Birch Elementary	L	M	H	▲ 3	▲ 1	▲ 1
Gonzalo Ackerman	29503	4	Maple Elementary	L	L	H	▲ 3	▲ 1	▲ 1
Lester Acree	41801	K	Maple Elementary	L	H	M	▲ 3	▲ 3	▲ 3
Brandy Acuna	42821	PK	Pine Elementary	L	L	H	▲ 1	▲ 1	▲ 1