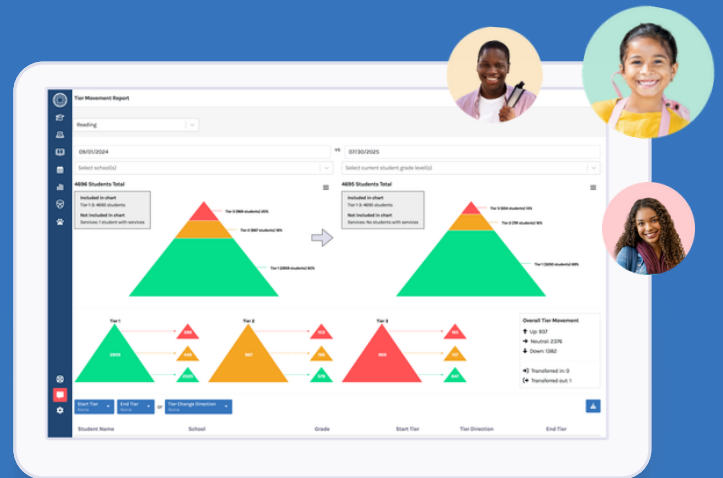


A Single Platform for Student Support and System Insights



Centralize Data

Consolidate academic, behavior, attendance, and intervention data

- **Automate** data ingestion
- **Access** assessments, discipline data, support plans, and much more
- **View** complete student profiles and system-level analytics

Gain Insight

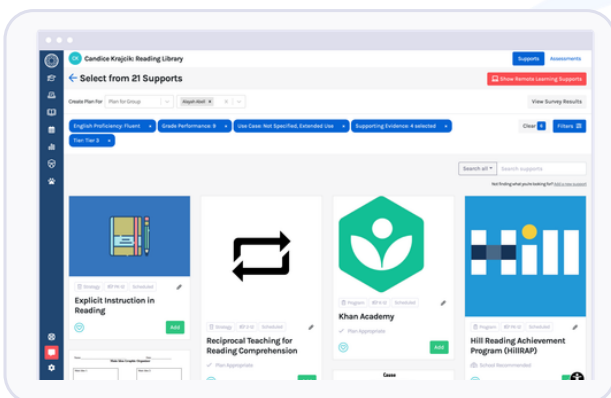
Analyze your data with clear, actionable reports

- **Monitor** the effectiveness of instruction and intervention in real time
- **Track** patterns across demographics, SPED status, and tier level
- **Identify** priorities and next steps

Take Action

Make it easy to create intervention plans and document progress

- **Set** cut scores, automate tiering, and create intervention plans
- **Follow through** on implementation fidelity
- **Evaluate** for Specific Learning Disabilities based on intervention data



Bring your data, analytics, and MTSS workflows together

so your teams can make informed decisions and provide timely support at the district, campus, and student level.



Meet Washington Requirements and District Goals with One Connected Platform:

- Multi-Tiered System of Supports (MTSS)
- OSPI Response to Intervention (RTI) for SLD Evaluation and Eligibility
- HB 1295 Literacy Screening and Support
- Early Warning System for Attendance, Behavior, and Course Performance
- Ninth Grade Success Model
- HB 1216 School-Based Threat Assessment

Why District Leaders Choose Branching Minds

Branching Minds ensures that records of student interventions are easily accessible and verifiable. **This helps SPED referrals** by housing the required 6-8 weeks of data. Decisions about student needs are based on objective, documented evidence.

- Christine Baldwin, Dir. of Curriculum & Instruction
Indian Springs School District, IL

With Branching Minds, You Gain:

- ➔ A single source of truth for student progress and system performance
- ➔ More consistent student support practices across schools
- ➔ Time and cost savings with proven return on investment



See what's possible with Branching Minds

Student Name	ID	Grade	School	A	B	C	Reading	Math	Behavior
Tremayne Aaron	26138	7	Oak Middle School	L	M	H	▲ 3	▲ 1	▲ 2
Cason Abel	39437	5	Willow Elementary	L	H	L	▲ E	▲ 1	▲ 3
Alayah Abell	41430	12	Hickory High Scho...	L	L	L	▲ 2	▲ 2	▲ 1
Gage Abernathy	39369	4	Elm Elementary	L	L	L	▲ 1	▲ 1	▲ 1
Jaelyn Abner	26912	7	Oak Middle School	L	L	L	▲ 1	▲ 3	▲ 1
Magdalena Abney	40237	10	Hickory High Scho...	L	L	L	—	▲ 1	▲ 1
Cristobal Abraham	26205	7	Oak Middle School	L	L	L	▲ 3	▲ 1	▲ 1
Buddy Abrams	24453	9	Hickory High Scho...	L	L	M	▲ 2	▲ 1	▲ 1
Lissie Abreu	23426	10	Hickory High Scho...	L	L	L	▲ 1	▲ 3	▲ 1
Solomano Acevedo	26014	7	Oak Middle School	L	L	L	▲ 1	▲ 1	▲ 2
Harriett Acker	39558	4	Birch Elementary	L	M	H	▲ 3	▲ 1	▲ 1
Gonzalo Ackerman	29503	4	Maple Elementary	L	L	H	▲ 3	▲ 1	▲ 1
Lester Acree	41901	K	Maple Elementary	L	H	M	▲ 3	▲ 3	▲ 3
Brandy Acuna	42821	PK	Pine Elementary	L	L	H	▲ 1	▲ 1	▲ 1

