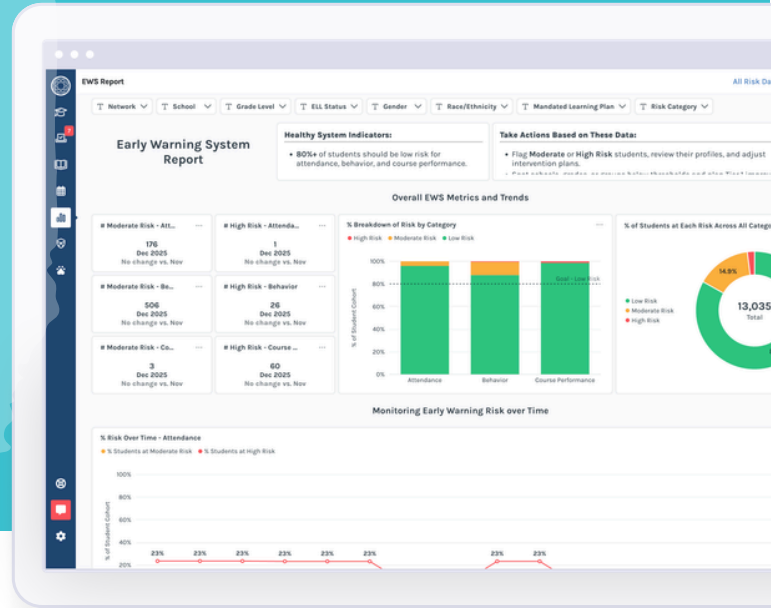


A Smarter Way to Address Chronic Absenteeism

Scalable Attendance Support for Illinois Districts



Absenteeism is a signal.

Branching Minds helps Illinois districts **see that signal early and take coordinated action at scale** – before absenteeism becomes chronic.

See Risk Early

with nightly updates and automated risk flagging for attendance, behavior, and course performance

Coordinate Support

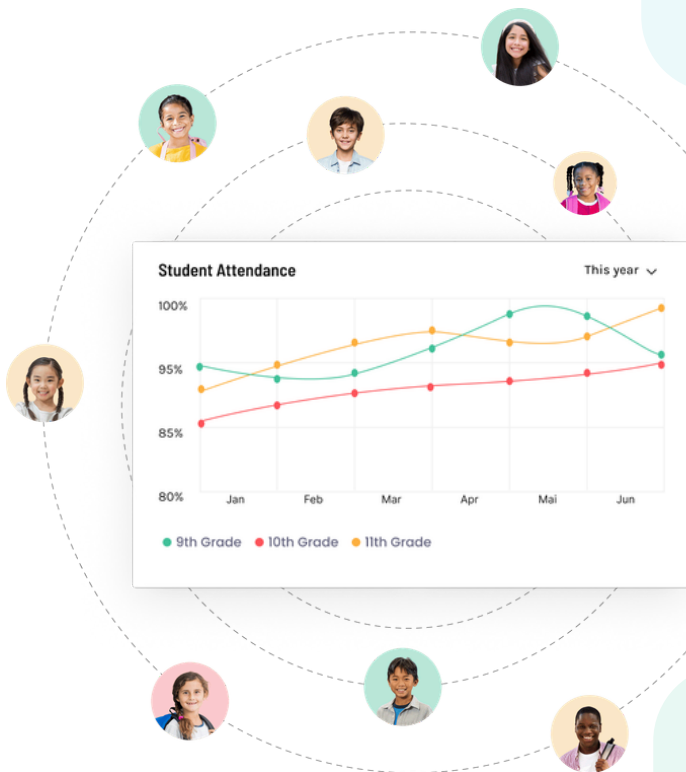
with guided workflows to plan and monitor targeted attendance interventions across schools

Connect Stakeholders

with tools for communication and documentation in one place

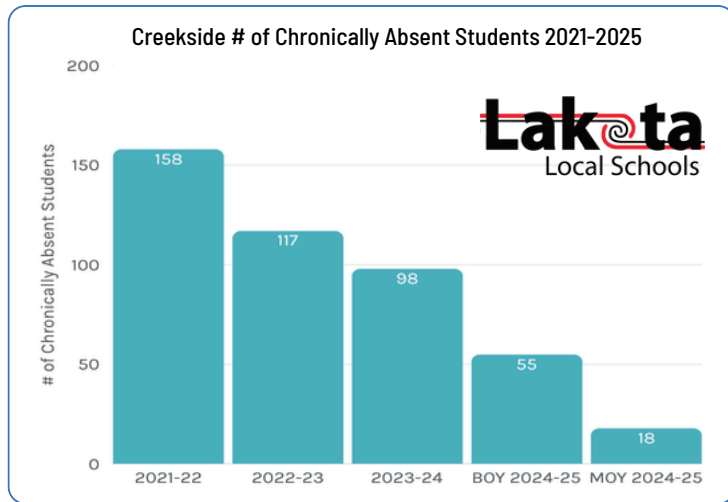
Track Progress

with district and campus dashboards for attendance trends, intervention fidelity, and more



The Impact of Early Attendance Intervention with Branching Minds

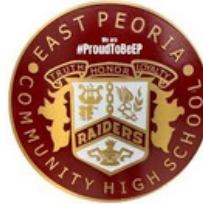
Creekside Early Childhood School, Lakota Local Schools, OH



The administrators at Creekside used Branching Minds to bring together attendance data, intervention planning, and tracking.

As a result, students flagged for chronic absenteeism dropped by **82%**.

Trusted by Illinois Districts



Ready to go beyond tracking attendance to actually improving it?

See what your district can do with Branching Minds.



Student Name	ID	Grade	School	A	B	C	Reading	Math	Behavior	Writing	Speech
Tremayne Aaron	26138	7	Oak Middle School	L	M	H	A 3	A 1	A 2	A 1	--
Cason Abel	39437	5	Willow Elementary	L	H	L	A 1	A 1	A 3	A 1	--
Alayah Abell	41430	12	Hickory High Scho.	L	L	L	A 2	A 2	A 1	A 1	A 1
Gage Abernathy	39369	4	Elm Elementary	L	L	L	A 1	A 1	A 1	A 1	A 1
Jaelyn Abner	26912	7	Oak Middle School	L	L	L	A 1	A 3	A 1	A 1	A 1
Magdalena Abney	40237	10	Hickory High Scho.	L	L	L	--	A 1	A 1	--	A 1
Cristobal Abraham	26205	7	Oak Middle School	L	L	L	A 3	A 1	A 1	A 2	A 1
Buddy Abrams	24453	9	Hickory High Scho.	L	L	M	A 2	A 1	A 1	A 3	--
Lissie Abreu	23426	10	Hickory High Scho.	L	L	L	A 1	A 3	A 1	A 1	A 1
Soloman Acevedo	26014	7	Oak Middle School	L	L	L	A 1	A 1	A 2	A 1	A 1
Harriett Acker	39558	4	Birch Elementary	L	M	H	A 3	A 1	A 1	A 1	A 1
Gonzalo Ackerman	29003	4	Maple Elementary	L	L	H	A 3	A 1	A 1	A 1	A 1
Lester Acree	41901	K	Maple Elementary	L	H	M	A 3	A 3	A 3	A 1	A 1
Brandy Acuna	42821	PK	Pine Elementary	L	L	H	A 1	A 1	A 1	A 2	A 1

